

205 Gti seat insert preparation, layout and sewing guide

Contents

Introduction	2
Important	2
Step 1 Marking up and cutting out:	3
Generic measurements:.....	3
Front seat:	3
Rear seat	3
Typical layout diagram to produce inserts for two front seats only (Figure 2)	5
Typical layout diagram to produce inserts for two rear seats only (Figure 3).....	5
Typical layout diagram to produce inserts for two front and two rear seats (Figure 4)	6
Step 2 Attaching the seat attachments.....	7
Typical backrest insert with insert attachments (Figure 5)	7
Typical seat attachment furniture locations (Figure 6).....	9
Front seats – cushion insert	9
Front seats – backrest insert.....	9
Rear seat – cushion insert.....	10
Rear seat – backrest insert.....	10

Introduction

This guide will help you to make up your new seat inserts using the material you purchased from 205 Gti covers & trim. You will have received sufficient material to make up either two or four sets of seat inserts.

Note: seat inserts are also called pads in the trim trade, and backrests are known as squabs.

“Seat trimming is the art of making the imprecise appear tailored by the application of gentle persuasion”

This is a fair summary of what we are about to undertake.

The supplied fabric being 75 x 145cms (approx') or 150 x 145cms (approx') – dependent on whether you ordered fabric for two or four seats.

To complete the refurbishment of your seats using this material you will need:

- Sewing needle #18 (jeans needle)
- M25 strong sewing thread
- Long straight edge
- Tape measure
- Marker pen
- Good (sharp) pair of scissors
- Use of a sewing machine

Important

Please note that these dimensions and layouts only apply to the “Recaro” style seats originally fitted to the Peugeot 205 Gti (all 1.6 and 1.9 variants). The supplied material is intended to as a replacement for the original ‘Quartet’ fabric only.

This guide is supplied in good faith and ‘205 Gti covers and trim’ accept no liability for any accident or damage caused during the seat refurbishment process.

Step 1 Marking up and cutting out:

First clear some space on a large flat area (table or work top) and lay your material out, pattern side down.

Check that you have the woven pattern running in the correct direction (horizontal or left to right). This is important if you have the larger material piece as it is square in shape.

You will now need a long straight edge, tape measure, marker pen and good (sharp) pair of scissors.

For the two seat layout there are three possible combinations (2 front seats, 2 back seats or 1 front and 1 back seat) when working with the smaller 75cms x 145cms piece. There is only one recommended layout for working with the larger 145cms x 150cms piece to obtain four sets of inserts.

Generic measurements:

Front seat:

There are two inserts required for each front seat:

- The backrest pieces at 68cms x 33cms
- The cushion pieces at 70cms x 37cms

Rear seat

For the rear seats there are also two pieces to be cut:

- The backrest piece at 75cms x 33cms
- The cushion piece at 56cms x 33cms

When you lay your material out for mark-up and cutting you should place the material in the orientation shown in fig 1 to ensure correct pattern alignment with the red interweave across the material i.e. in the X axis.

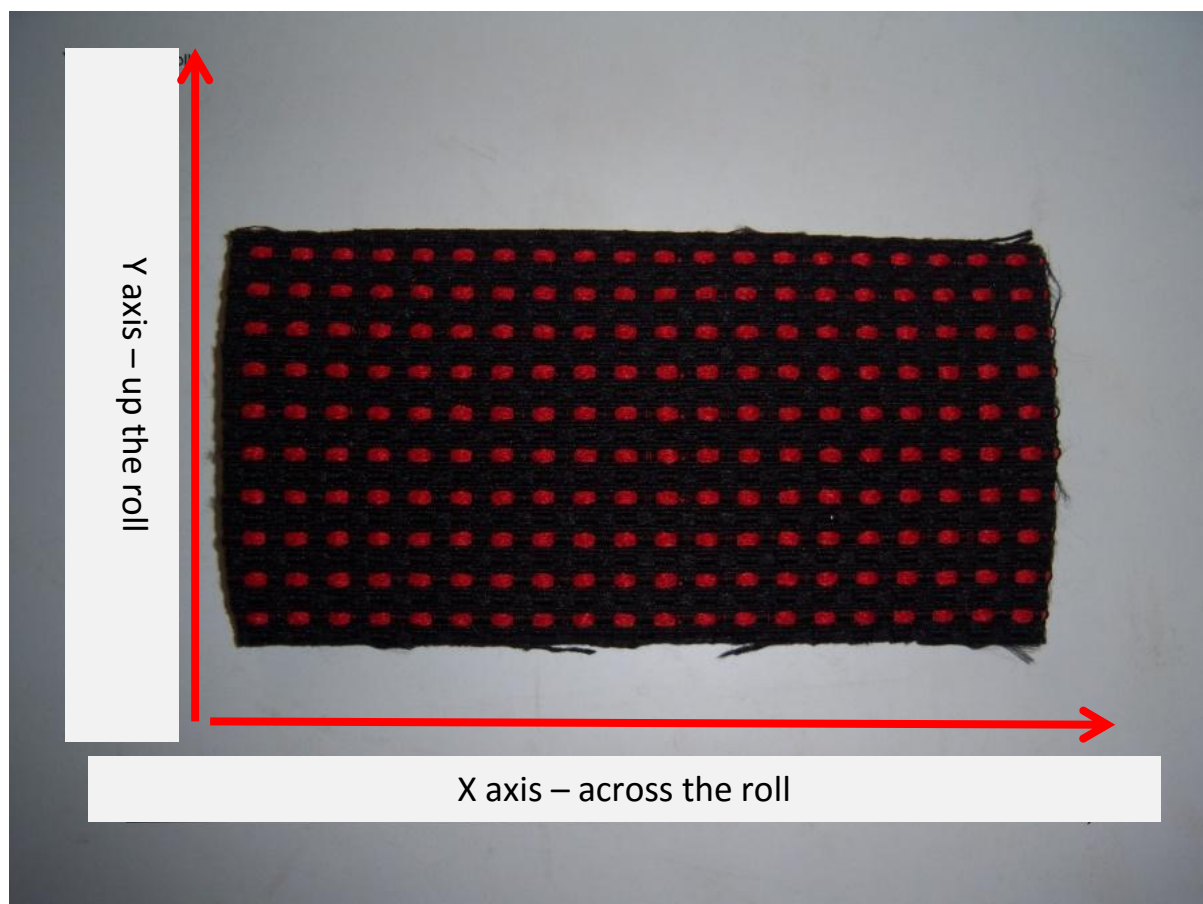


Figure 1: Material direction

Note: It is important that the inserts are positioned correctly prior to cutting. The pattern **must** be square to the insert fabric otherwise it will look as though the pattern is sloping when sewn in place.

Remember the old adage – measure twice, cut once

Typical layout
inserts for two front

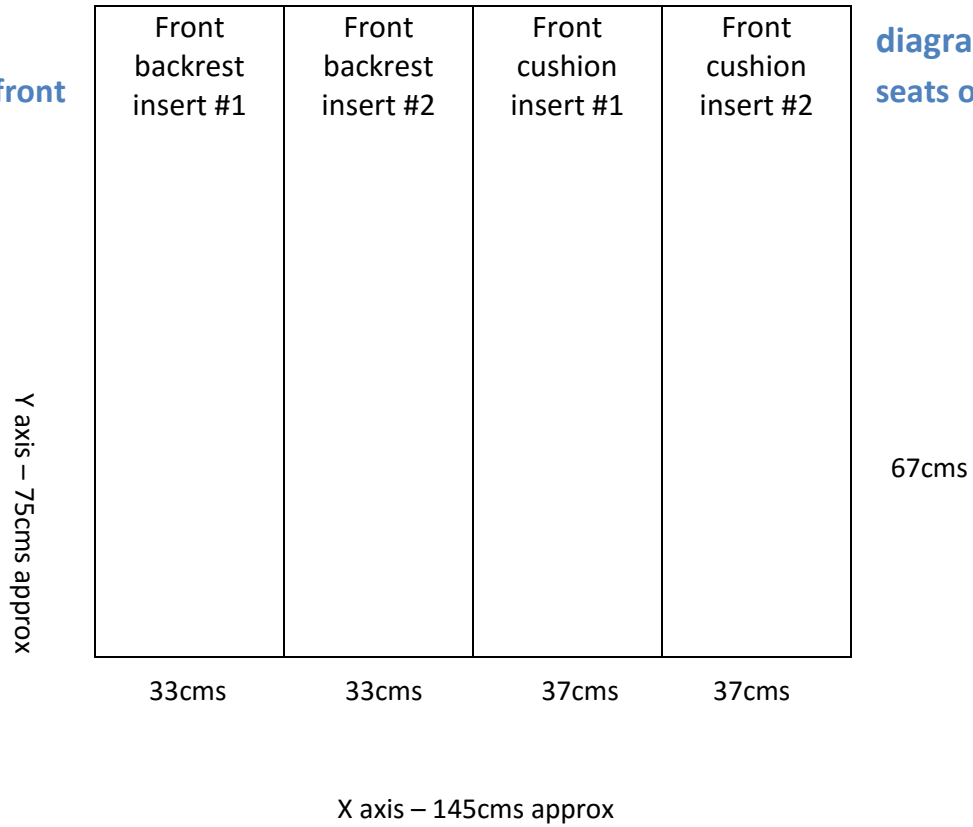
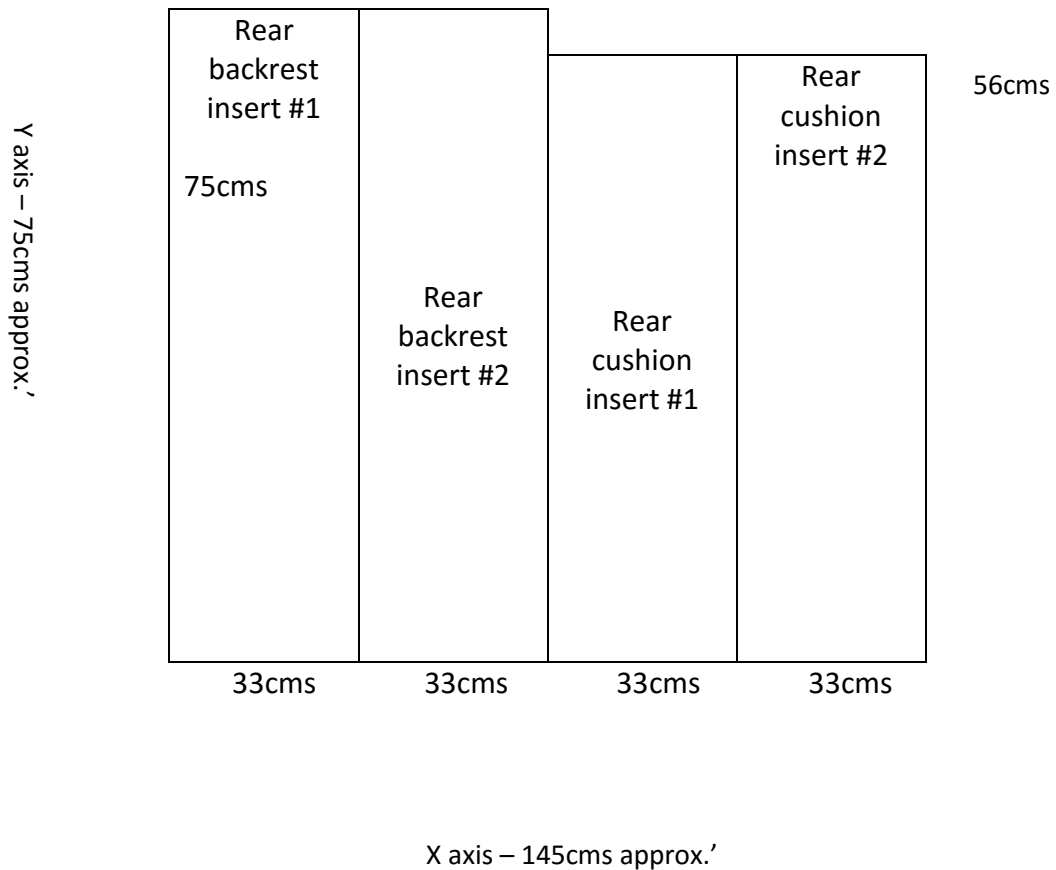
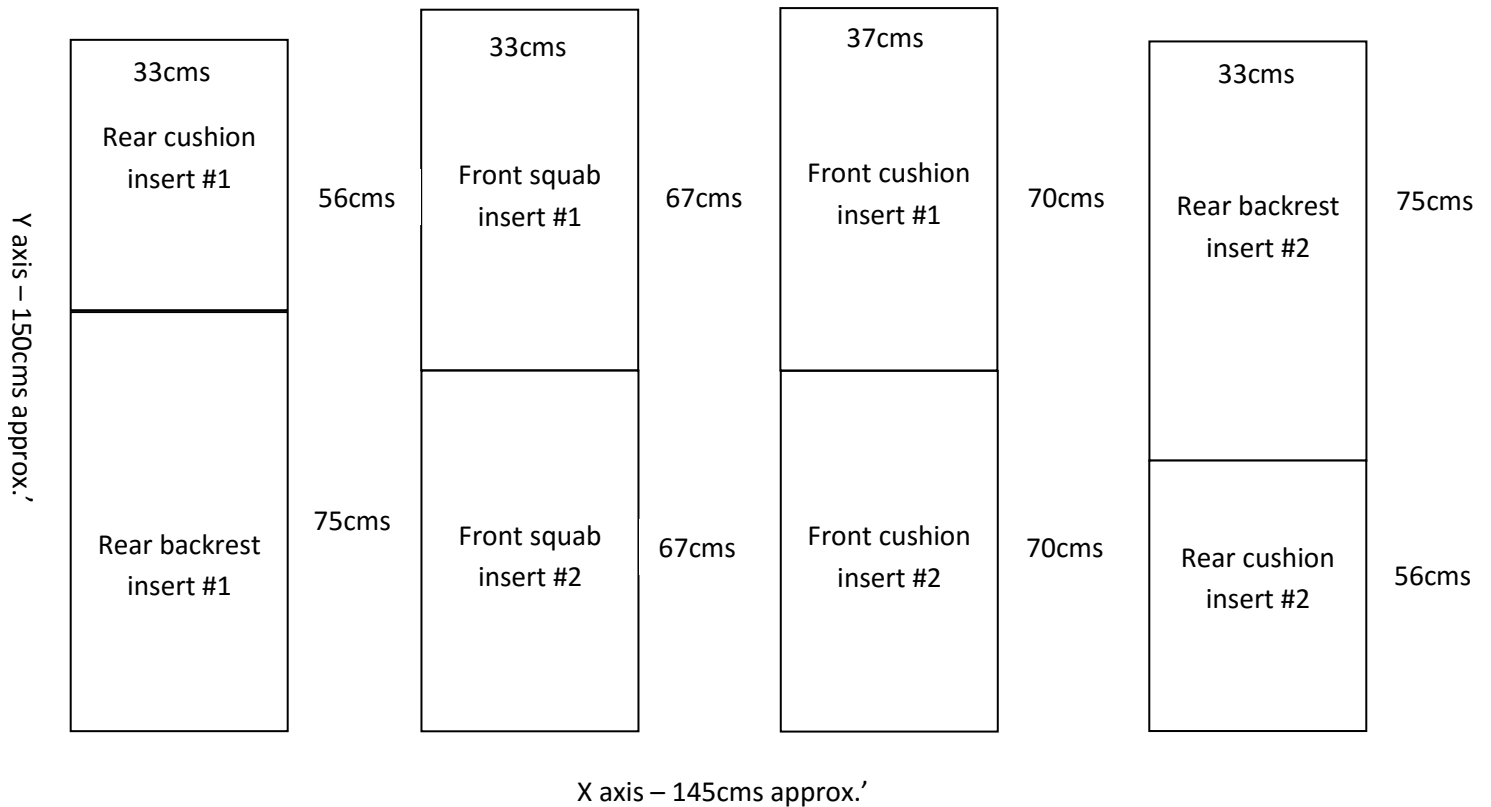


diagram to produce
seats only (Figure 2)

Typical layout diagram to produce inserts for two rear seats only (Figure 3)



Typical layout diagram to produce inserts for two front and two rear seats (Figure 4)



Note: The dimensions are exact but they have a seam allowance of +8mm built in. It is more important to get the layout square, otherwise the pattern may appear to slope and will not look good.

Once you are satisfied (check twice, cut once) cut out the inserts, marking each one with a type id code so you don't get them mixed up – the following convention is suggested:

- Front seat backrest insert **FSB**
- Front seat cushion insert **FSC**
- Rear seat backrest insert **RSB**
- Rear seat cushion insert **RSC**

Step 2 Attaching the seat attachments

Now you have cut the relevant pieces for creating the two or four sets of inserts, you need to attach the pieces of equipment that hold the material to the seat (not supplied) – these consist of the following:

- Velcro loop strip
- Linen tube listings
- Plastic wing piping

Now mark up the positions of the insert attachments. It is recommended that you use your old insert fabric as a template in order to position the attachments correctly.

Take care to get the new material the correct way around to ensure the right ends are used and lay the attachments up before fixing in place.

Typical backrest insert with insert attachments (Figure 5)



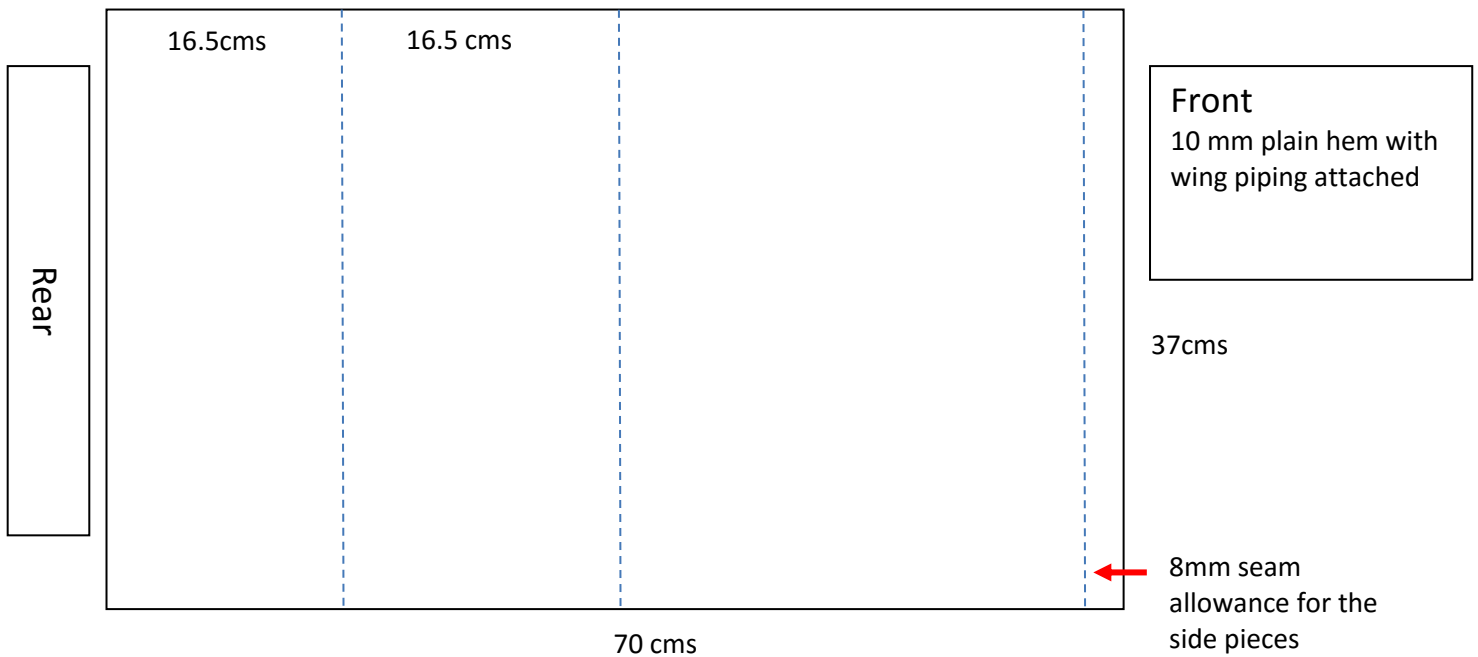
When I first produced these notes I had not gone into seat cover production on a regular basis. I have now made some changes to positions of the attachment listings based on real seats. The critical positioning attachment is the Velcro strip which locates the insert relative to the bolster covers.

The following diagrams indicate the position of the attachments on each insert.

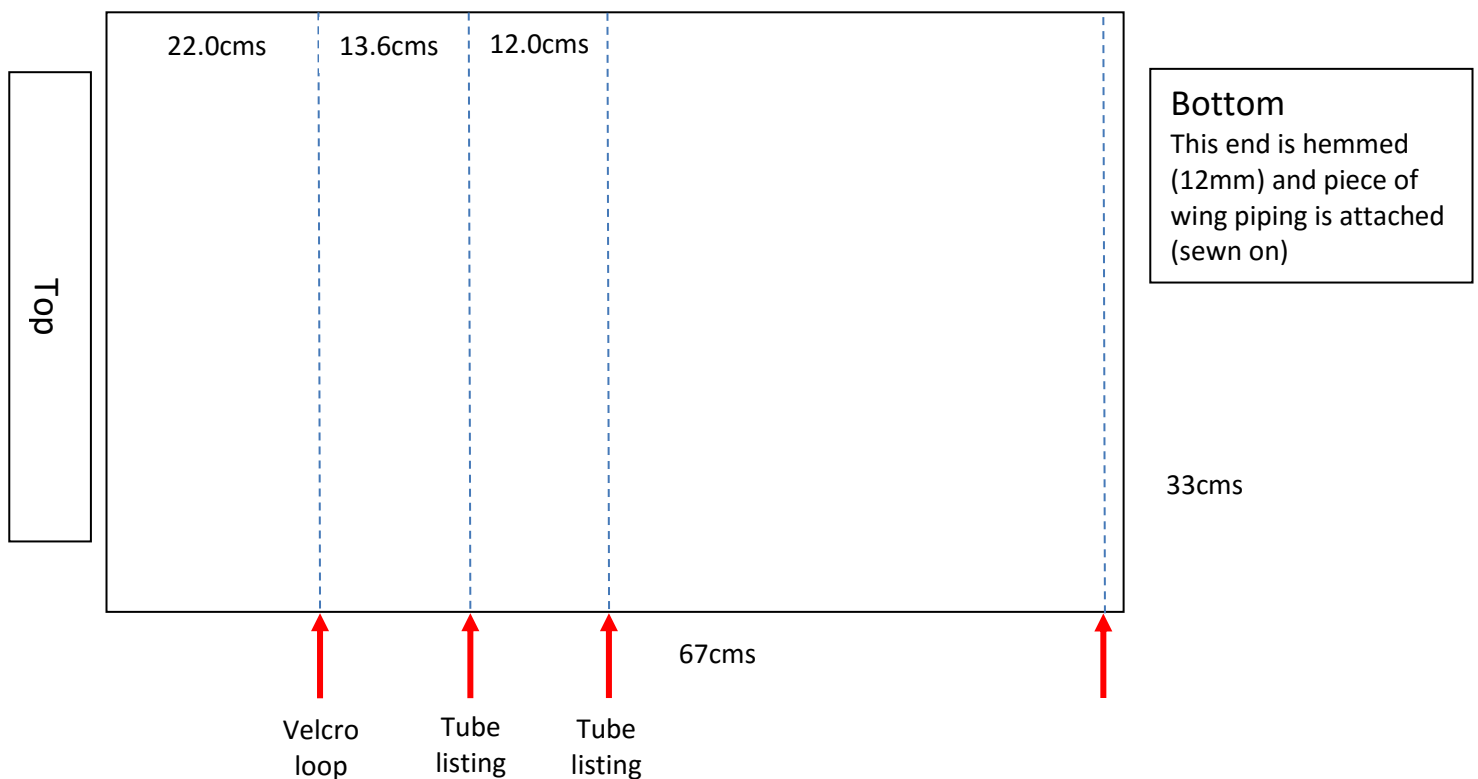
Typical seat attachment listings location (Figure 6)

When fixing the attachments, ensure the lines are horizontal to avoid 'slope syndrome'.

Front seats – cushion insert

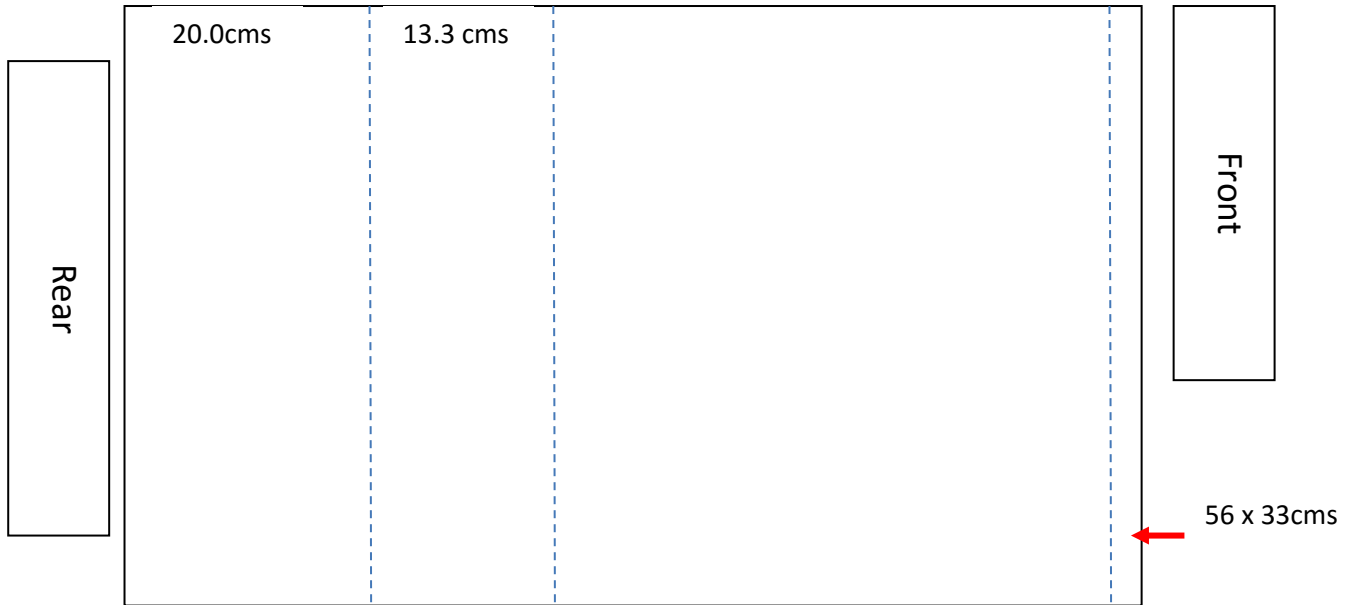


Front seats – backrest insert

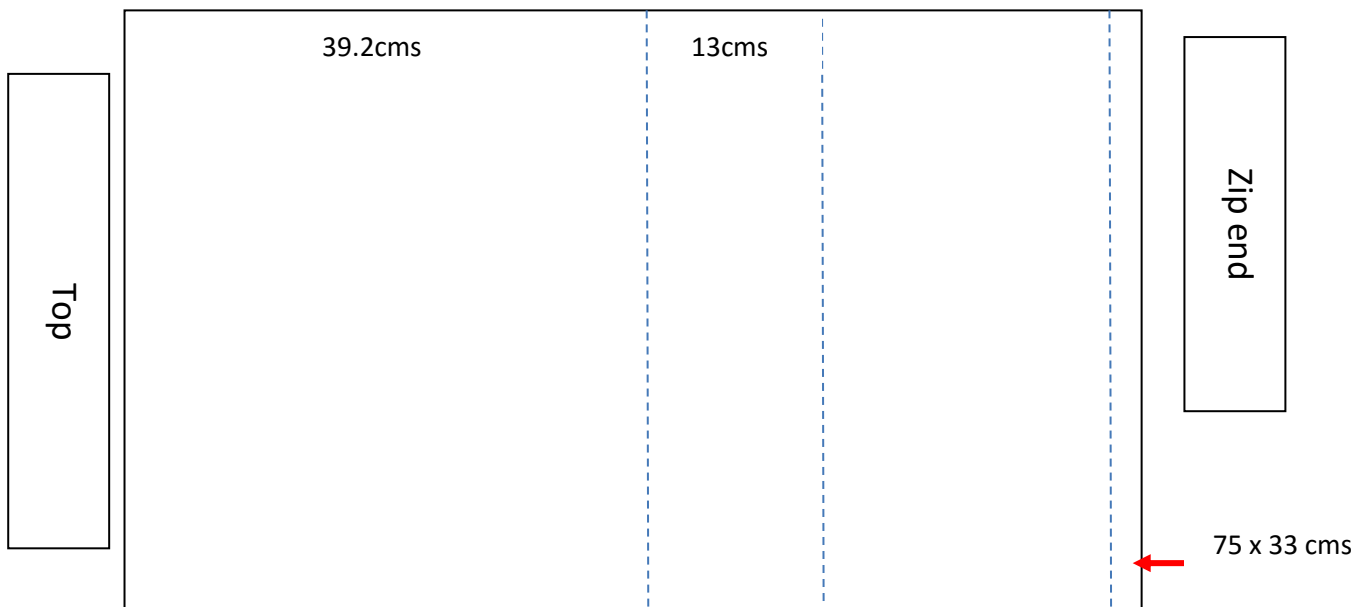


Note: the linen (tube) listings require three 'v' nicks to enable the hog rings to be fitted - one in the middle and one approximately 3cms from each end to accommodate the hog rings or wire fixings (which ever you choose)

Rear seat – cushion insert



Rear seat – backrest insert



The measurements given above are taken from numerous sets of old covers and represent a good average.

It is advised that you compare measurements against your own inserts as the measurements are given here only for guidance.

For the Velcro the measurement is to the centre line of the strip and for the linen tube listing it is to the sew line.

As a general rule going from the top/rear of an insert , the Velcro comes first followed by 1 (or 2) linen tube listings, and maybe a wing piping piece sewn to the end hem. See the appendix for pictures of these and also the wing piping and wire inserts (fig 7) and the details explanation in (fig 8)

Once you are happy with the positions marked to your satisfaction you can proceed to sew each item in place. If you like you can do a quick check again while sewing, just offer the insert up to the seat foam and check alignment. It is quite a bit of sewing but once completed your inserts are ready to assemble into the main structure of the seat.

Appendix

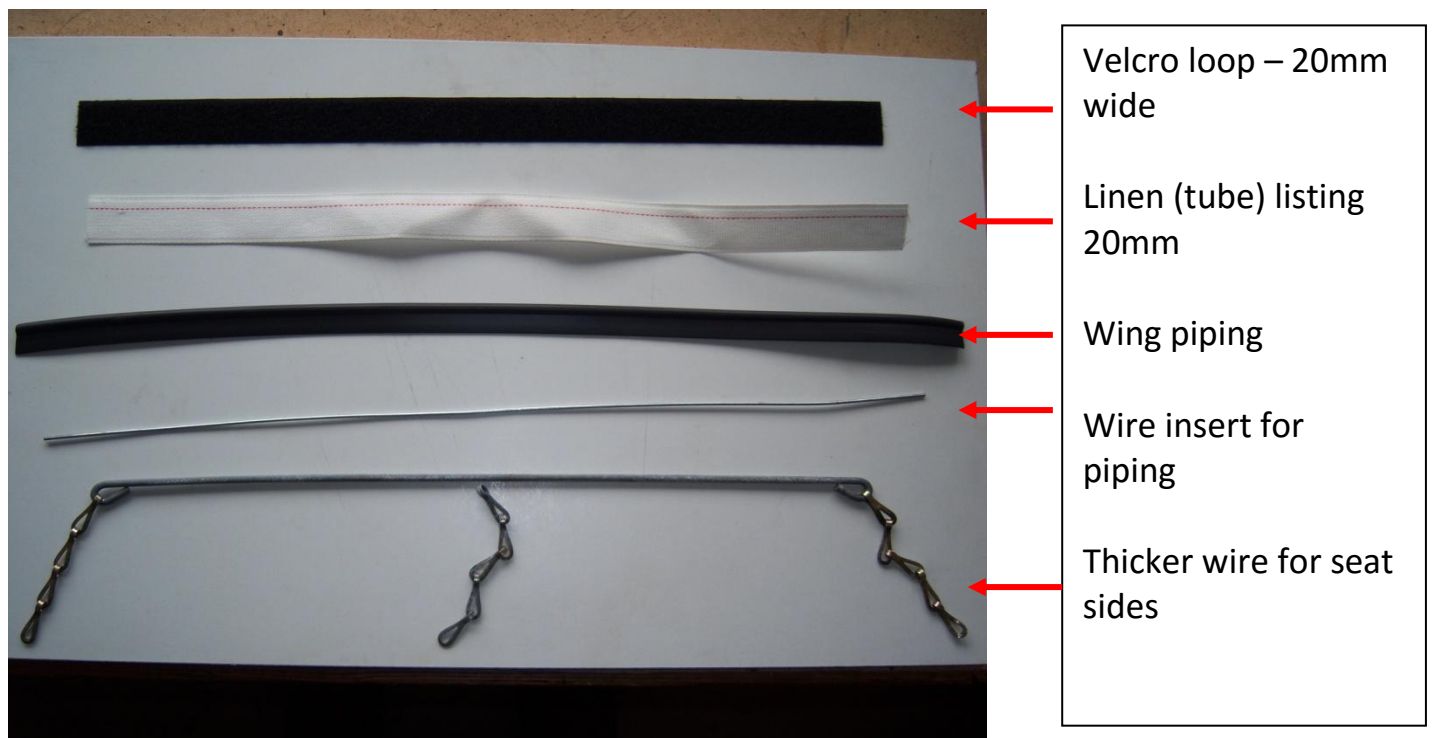


Figure 7: Types of seat Insert attachments

These are the various things used to attach your insert to the seat foam. Do not forget to keep the wire inserts on one side when you dis-assemble your seat as they are not easy to replace. Keep all wires for each seat taped together and you won't lose them.

If you wish to save time you can purchase an attachment kit from, which contains enough insert piping, Velcro etc for 4 seats. This is available from my web shop and costs £6 plus P+P (wires not included)

Thank you for your purchase and please do not hesitate to contact 205 Gti covers and trim if you have any queries, via our website at <http://205gticovers.com/>